

H36/H46 H6236/H6246

Flat Bed Linear Guide Rail CNC Lathe

Application

- The machine is suitable to process all kinds of small and middle-sized shaft and plate work piece, and could also turn various threads, circle arc, circular cone, inside and outside surface of revolved body. This machine is widely used in sanitary, valve, electrical appliance, instrument, automobile, motorcycle, bearings and so on.

CNC Lathe Features

- Higher accuracy Taiwan linear guideways
- Higher speed spindle unit, Optional homemade spindle
- Higher rigidity cast iron
- Integrated automatic of H6236 and H6240, linear guideways in X axes are reversely installed.



SPECIFICATIONS	Unit	H36	H46	H6236	H6240
Max.swing over bed	mm	360	460	360	420
Max.swing over cross slide	mm	110	140	110	140
Max.processing length	mm	250	330	250	330
X/Z axis travel	mm	340/250	360/330	270/250	300/380
Spindle nose		A2-5	A2-5	A2-5	A2-5
Spindle bore	mm	48	56	48	48
Bar capacity	mm	38	42	38	38
Max. spindle speed	rpm	2500/4000	3500	4000	4000
Chuck size	mm	6	8	6	6
Spindle motor	KW	4	5.5	4	5.5
X/Z axis repeatability	mm	±0.003	±0.003	±0.003	±0.003
X/Z axis feed motor torque	N.m	X:4 Z:4	X:4 Z:6	X:6 Z:6	X:6 Z:6
X/Z axis rapid traverse	m/min	15/15	15/15	15/15	15/15
Tool post type		4 gang type tool post	4 gang type tool post	4 gang type tool post	4 gang type tool post
Cutting tool shape size	mm	20x20	25x25	20X20	20X20
Guide form		Linear guide rail	Linear guide rail	Linear guide rail	Linear guide rail
Total power capacity	KVA	8	9.5	8.5	10
Machine dimension(LxWxH)	mm	2000/1400x1580	2335x1815x1605	2120X1400X1600	2000X1300X1600
Net weight	kg	1500	2200	1500	2200

SLANT BED CNC LATHE SERIES

CNC Lathe Features

- Two spindle
- Taiwan higher accuracy linear guideways
- Higher working efficiency
- Automatic lubricating

H6236 × 2

Double spindle linear guide rail cnc lathe



Application

- The machine is two spindle CNC lathe machine with higher speed, higher precision and higher reliability. The spindle is in unit structure, the motion given by the frequency motor will be transferred to the spindle through synchronous belt, thus we can get the highest speed. The spring clamps are employed for the clamping the workpiece, which makes the clamping become more convenient, the accuracy highly improved and the operating strength saved. Spindle bearing is contacted by 5 angular, 3 of which are placed in the front and 2 in the back. It makes the higher speed and higher rigidity. The machine tool adopts reverse loading slide saddle, linear guide rail, has the stronger rigidity, faster feeding speed, easier chip removing. X and A axis screws are in the middle of the carriage, force well-distributed smooth in the movement, higher in speed. Fully shield machine house does not leak oil and water, green and beautiful.

SPECIFICATIONS	Unit	H6236 × 2
Max.swing over bed	mm	350
Max.swing over cross slide	mm	110
Max.processing length	mm	Collet300/chuck200
X/Z axis travel	mm	270/250
Spindle nose		A2-5
Spindle bore	mm	48
Bar capacity	mm	38
Max. spindle speed	rpm	4000
Spindle motor	KW	5.5
X/Z axis repeatability	mm	±0.003
X/Z axis feed motor torque	N.m	X:6 Z:6
X/Z axis rapid traverse	m/min	15/15
Tool post type		4 gang type tool post
Cutting tool shape size	mm	20X20
Guide form		Linear guide rail
Total power capacity	KVA	8.5
Machine dimension(LxWxH)	mm	2900X1400X1650
Net weight	kg	2600

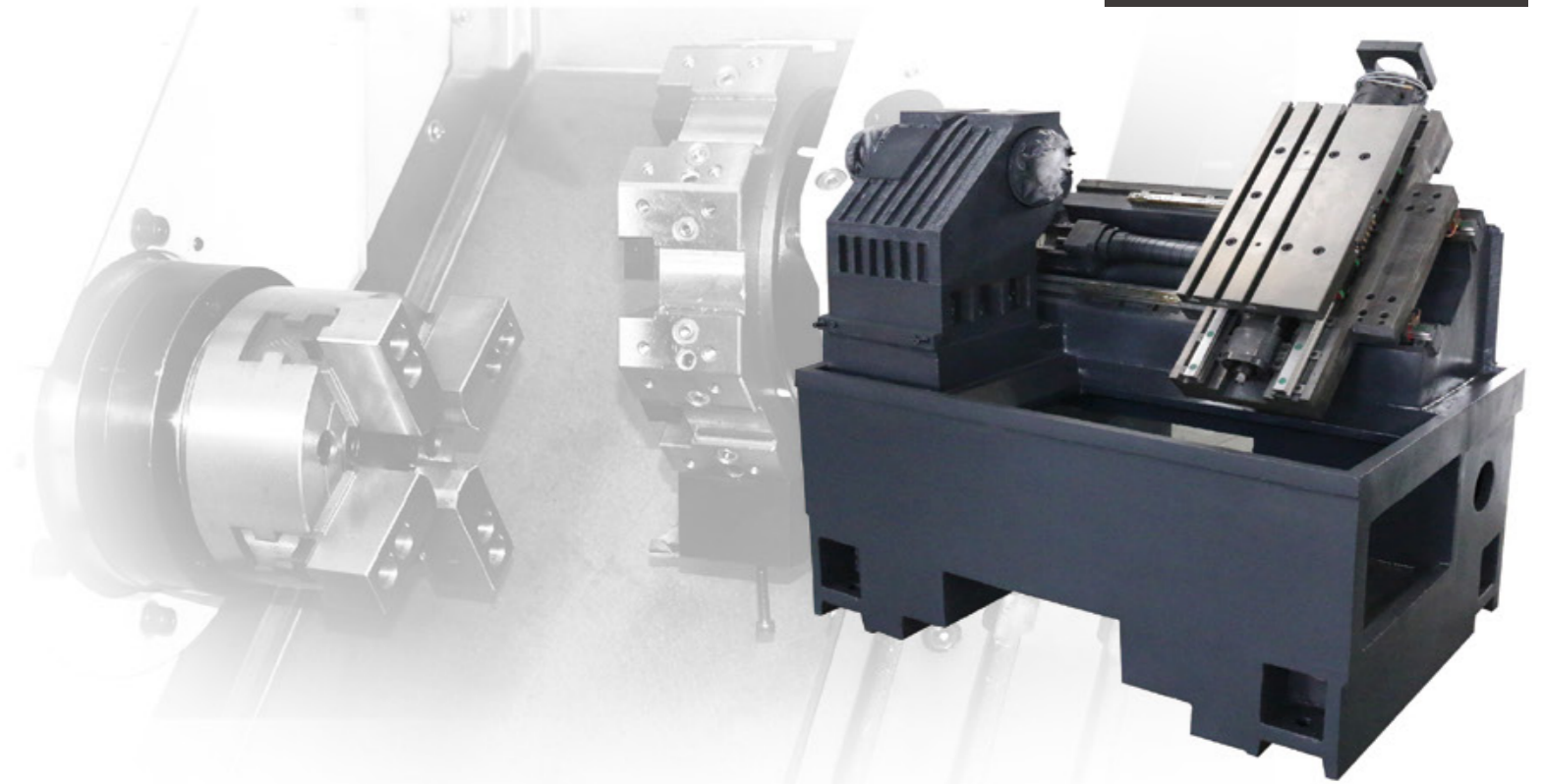
SCK6339 / SCK6350

Slant bed CNC lathe



Product main features

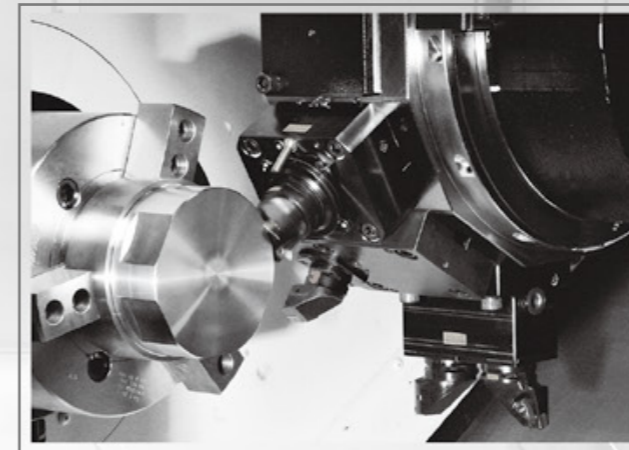
- 45 degree slant bed cnc lathe
- High accuracy Taiwan linear guideways
- Chip conveying capacity is large and convenient ,customer could choose chip conveying in the right or in the back
- Spindle unit has two types ,the heavy duty cutting type and the high speed type.The first one is suitable for bearing and gear processing .The second type is suitable for high speed and high precision processing.Customers could choose any type of them
- Screw pre-stretching structure • Gang type tool post • Optional turret



SPECIFICATIONS	Unit	SCK6339(S)	TCK6350
Max.swing over bed	mm	390	Φ520
Max.swing over cross slide	mm	130	Φ220
Max.processing length	mm	200(400)	410(gang tool)/530 (turret)
X/z travel	mm	400/300(500)	500/500
Spindle unit	mm	Φ140/Φ170	200
Spindle nose		A2-5	A2-6/A2-8
Spindle bore	mm	Φ48/Φ56	66
Spindle drawn tube diameter	mm	Φ40/Φ45	55
Max.spindle speed	rpm	4000/3500	3000
Chuck size	in	6/8	10
Spindle motor	kw	3.7/5.5	7.5/11
X/Z axis repeatability	mm	+/-0.003	+/-0.003
X/Z feed motor torque	N.m	6/6	7.5/7.5
X/Z rapid traverse	m/min	18/15(18/18)	18/18
Tool post type		Gang type tool post (turret optional)	Gang type tool post (turret optional)
Cutting tool shape size	mm	20*20	25*25
Guide form		Integral type 45°	Integral type 45°
Total power capacity	KVA	9/11	14/18
Machine dimensions(LxWxH)	mm	2200(2390)x1530x1780	2550x1400x1710
N.W.	kg	2200(2500)	2900

SCK6040 / SCK3040 SCK3040L / SCK4558

SCK series CNC lathe



SPECIFICATIONS	Unit	SCK6040	SCK3040	SCK3040L	SCK4558
Bed incline	°	60	30	30	45
Max.workpiece length	mm	300	580	900	960
Culting capacity over bed	mm	φ200	φ400	φ400	φ360
Culting capacity over support	mm	φ400	φ450	φ450	φ580
Chuck size		A2-5	A2-6	A2-8	A2-8
Spindle motor power	kw	7.5	7.5	7.5	15
spindle speeds	rpm	60-5000	4500	3500	100-2600
Spindle bore	mm	φ55	φ62	φ72	φ87
Dia.of bar through spindle bore	mm	φ40	φ50	φ60	φ70
Rapid feed speed	m/min	20	18	18	15
X travel	mm	400	210	230	350
Z travel	mm	320	600	900	960
Tailstock sleeve diameter	mm	-	65	65	100
Tails stock sleeve travel	mm	-	100	100	120
Tail stock travel	mm	-	450	780	1000
Tail stock taper	-	-	MT4	MT4	MT5
Positioning accuracy	mm	±0.008(X)±0.011(Z)	±0.008(X)±0.011(Z)	±0.008(X)±0.011(Z)	±0.008(X)±0.011(Z)
Repositioning accuracy	mm	±0.003(X)±0.005(Z)	±0.003(X)±0.005(Z)	±0.003(X)±0.005(Z)	±0.003(X)±0.005(Z)
Machine dimensions(LxWxH)	mm	2200x1750x1880	2200x1750x1880	2200x1750x1880	4200x2000x2000

Product features

- TC series CNC lathe is designed with high strength,rigidity and with advanced machine structure,defense,and security.The machine adopt the high rigidity cast iron,base and monolithic structure,high precision through-hole structure,vibration resistance designed and high range spindle motor.The bearings and feeding screw adopt the world famous brand,equipped with multi-position tools post,tools are easily changed and changed fast with high precision .CNC system can adopt FANUC Oi-TD,FANUC Oi-Mate TD,SIMENSE 810D,SIMENSE820D,DASEN 3i,and other brand can also be chosen,the hydraulic parts,lubrication parts,chuck adopt the high quality productions well.
- The outlook is designed well,working panel can be easily operated,full cover.Comparing with other same type,our product owns higher precision and performance and big power.

SCK420 / SCK520

Sant bed CNC lathe



Application

- The machine are the slant bed cnc machine tools of higher speed ,higher precision and higher reliability.The spindle is in unit structure ,servo main motor for high speed.The hydraulic chuck is employed for clamping the workpiece ,which makes the clamping by 5 angular ,3 of which are placed in the front and 2 in the back.It makes the higher speed and higher rigidity .Machine adopts 30 degree oblique slide saddle and liner guide rail ,stronger in rigidity,faster in feeding speed and easier in chip removal .The X and Z axis screws are in the middle of the carriage ,well-distributed in force,smooth in movement ,higher in speed .The 8-tool hydraulic turret changers tools quickly ,stably ,precisely and chooses tool from the nearest .It is easy to operate hydraulic tailstock.Full shield machine house does not leak oil and water ,gree and beautiful .

SLANT BED CNC LATHE SERIES

CNC Lathe Features

- Taiwan higher accuracy linear guide ways
- Taiwan ball screw
- Hydraulic magazine
- Taiwan hydraulic chuck
- Hydraulic tailstock
- Taiwan hollowed rotary cylinder

SPECIFICATIONS	Unit	SCK6040	SCK3040
Max.swing over bed	mm	420	520
Max.swing over cross slide	mm	200	320
Max.processing length	mm	400	500
X/Z axis max.travel	mm	160/400	220/500
Spindle nose		A2-6	A2-8
Spindle bore	mm	66	80
Bar capacity	mm	50	60
Max.spindle speed	rpm	3000	2500
Chuck	in	8	10
Spindle motor power	kw	5.5	7.5
X/Z axis repeatability	mm	+/-0.003	0.003
X/Z axis feed motor torque	N.M	5/7.5	7.5/7.5
X/Z rapid traverse	M/min	12	10
Tailstock travel	mm	350	350
Quill travel	mm	90	100
Tailstock taper		MT4	MT5
Tool post type	mm	8 station hydraulic turret	8 station hydraulic turret
Tool post size	mm	20x20	25x25
Guide form		30° degree	30° degree
Guide rail movement way		Linear guide rail	Linear guide rail
Total power capacity	KVA	11	15
Machine dimensions(LxWxH)	mm	2300x1500x1650	2450x1600x1700
Weight	kg	3000	4200